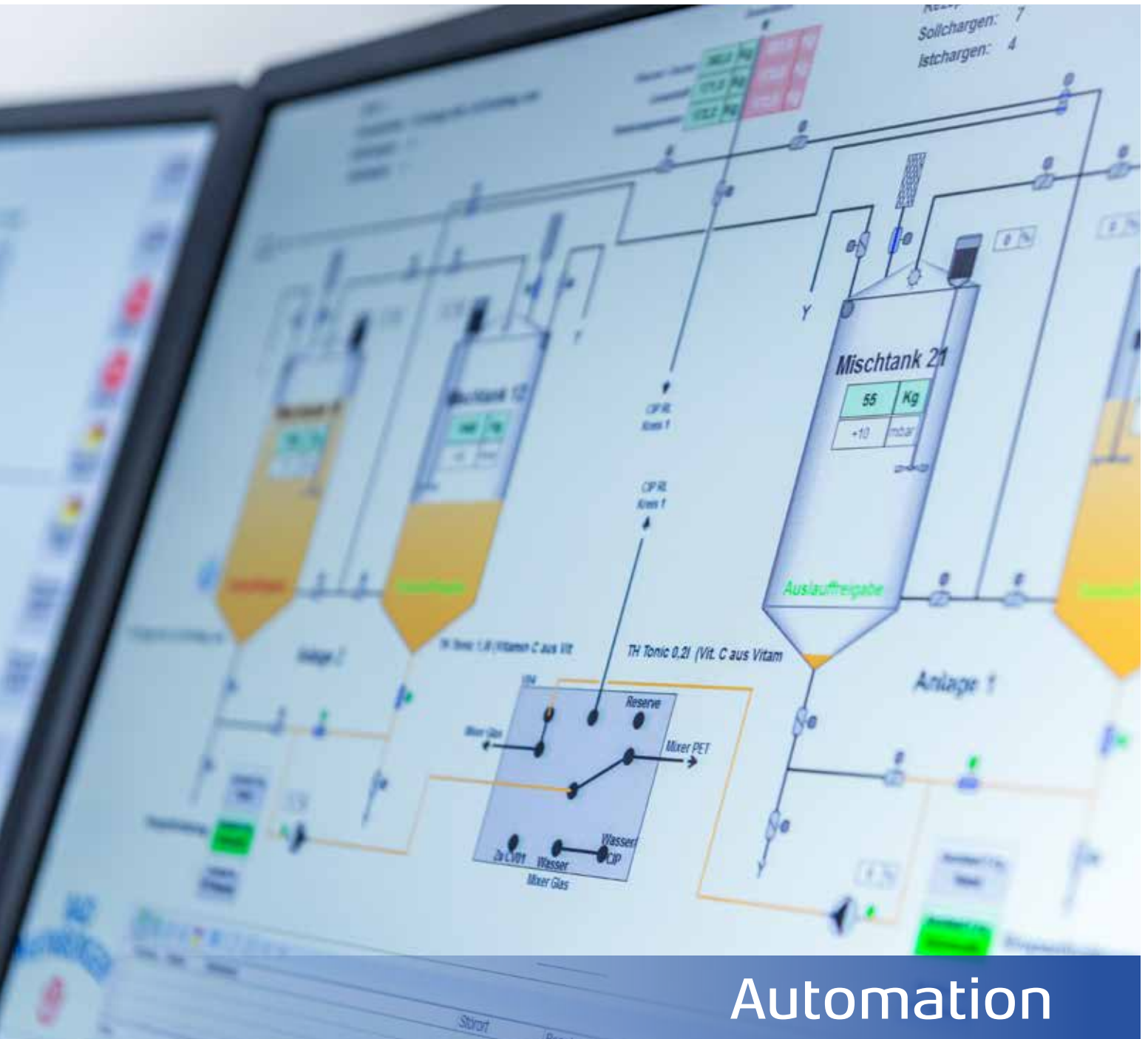
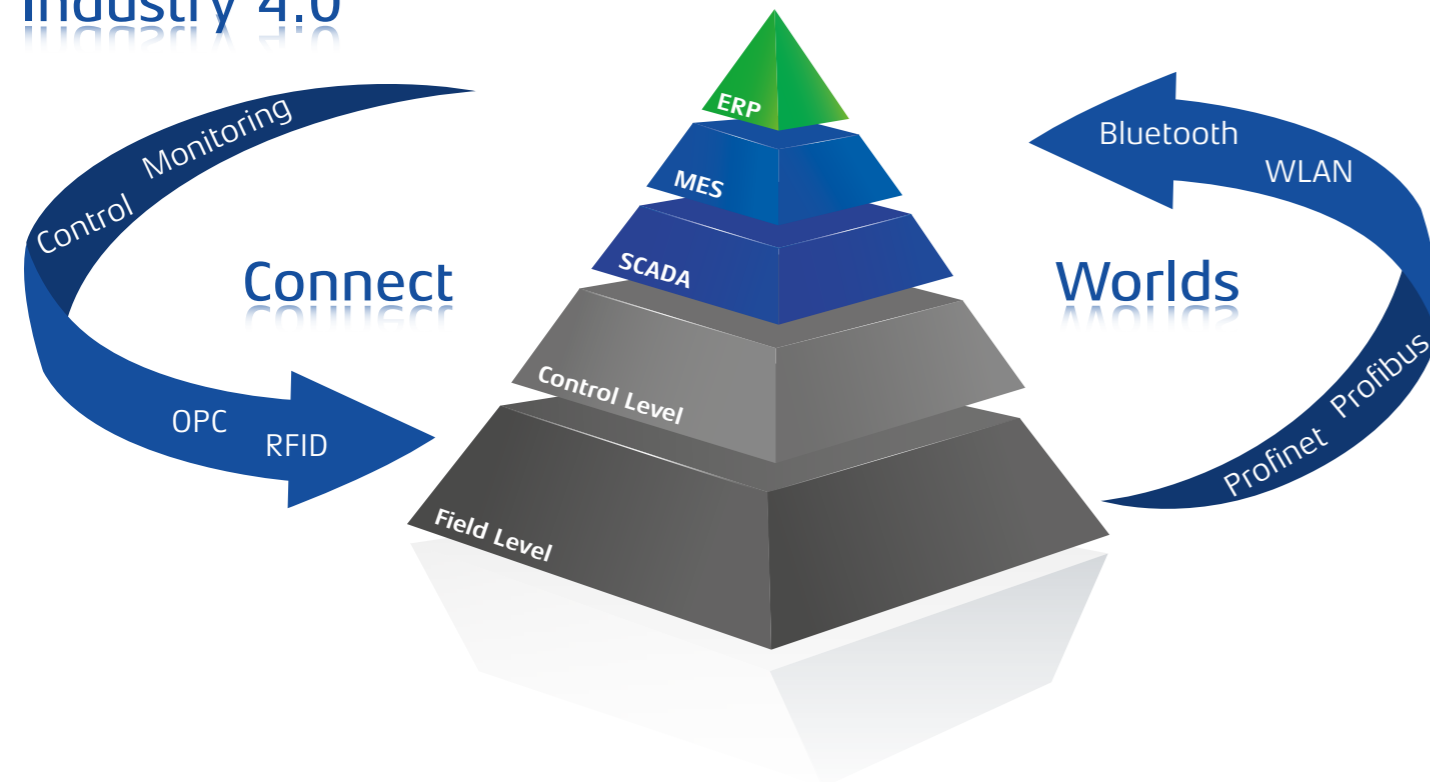


<b>Automation &amp; IT-Consulting</b> Process optimisation through automation expertise	page 02
<b>Basic Engineering &amp; Projektmanagement</b> Tailored solutions	page 04
<b>E-Technik &amp; Schaltanlagenbau</b> Individual concepts	page 05
<b>Anlagen- &amp; Produktsicherheit, Wartung &amp; Dokumentation</b> For the highest quality	page 06
<b>Customer Support &amp; Service</b> Competent & reliable service	page 07



## Industry 4.0



## AUTOMATION & IT-CONSULTING

### Process optimisation through automation expertise

Wellmann Engineering provides automation concepts for liquid products in the food, beverage and pharmaceutical industries.

Reliability, quality, optimal process parameters, innovative concepts, user-friendly operator interfaces and functional safety form the basis for an optimal automation solution. Our automation team is specialised in solving problems relating to process engineering and provides you with consultancy services, concept design through IT consulting to after-sales service – all from a single source.

Wellmann Engineering develops tailor-made and integrated IT and automation solutions for your processes and needs and integrates these solutions into existing infrastructure. With IT consultancy services tailored to your needs a stable and reliable process technology can be ensured.

Adherence to budgets and time schedules are important objectives within project management. The project's success is therefore guaranteed by means of standardised processes used in project management.

Programming and visualisation concepts range from a simple controller to graphic visualisation with touchscreen operation. Automation concepts for complex production processes provide you with everything you need from operational control systems with an ERP interface and the recording of operating data with batch tracking to make your processes safe.



### Our skills

- SPS & SCADA systems for process engineering systems
- Control systems with link to ERP systems
- Hardware engineering using EPLAN P8 standard software including EPLAN fluid
- Electric P8 for electric/pneumatic systems
- Software engineering using WinCC, Win CC flexible, Totally Integrated Automation (TIA) Portal or Wonderware in accordance with applicable FDA requirements
- Prospective and retrospective validation
- Recipe management (ingredients and process steps)
- Raw materials warehouse management
- Batch tracking
- Commissioning
- Customer training for operators and persons responsible
- IT consultancy services - advice on IT hardware and software
- Software qualification
- Migration and modernisation of existing PLC control and visualisation systems
- Drawing up, revising and updating technical documentation including data processing





## BASIC ENGINEERING & PROJEKTMANAGEMENT

Customised automation solutions from a single source

Basic engineering forms the basis for each new customer-specific concept, extension or upgrade of an existing process landscape and process control system.

Our expertise lies in the provision of advice and concept design to create transparency along the entire process chain in the company.

All processes must be looked at from the bottom-up for the perfect implementation of automation concepts. This is where the Wellmann Engineering concepts come into play, which ensure reliable process management for hardware and software from the production to the administration control level.

A major advantage is the integrated system approach, which enables systems and databases to be centralised. Industry 4.0 concepts and concepts for IT-supported management control systems can be implemented on a forward-looking basis.

### Our services

- Planning, concept design, project planning, plant modernisation, installation and start-up of automation solutions
- Qualification and validation of automation systems
- Design and planning of measuring points and electrical engineering
- Carrying out FAT function tests and conducting operator training courses using field simulations
- Creation of calibration schedules and related error calculations
- Engineering, preparing circuit diagrams and management of the entire electrical engineering project using the EPLAN Electric P8 standard software
- Complete technical documentation ensuring reliable system operation
- Configuration and calculation of functional modules in accordance with the ATEX explosion protection guideline and functional safety (SIL)
- Industry 4.0: link to downstream systems with the objective of, for example, creating intelligent maintenance concepts



## E-TECHNOLOGY & SWITCHGEAR CONSTRUCTION

Individual hardware concepts

Hardware and software engineering from one source is how Wellman Engineering sees the design of individual concepts for your plant.

Our experienced employees provide support during the entire process from concept design to start-up. In addition to the design of the components the entire installation is organised on a cross-departmental basis so that there are no interfaces between planning and execution.

By drawing up a component list necessary maintenance and service concepts can be developed and customised.

Competent switchgear construction for electronic and pneumatic plants in compliance with the ATEX explosion protection guideline and functional safety (SIL) is also included in the full service provided by Wellmann Engineering.

Control cabinets and switchgears are individually manufactured using modern technology, with in-house engineering or existing circuit diagrams depending on requirements. Compliance with current standards and working regulations is a given.

### Our services

- Complete delivery of hardware designed in accordance with specific requirements
- Switchgear construction in accordance with UL and EN
- Design and planning of measuring points and electrical engineering
- Implementation of individual control cabinets
- Custom-made electronic and pneumatic systems
- Switchgear construction in accordance with the ATEX explosion protection guideline and functional safety (SIL)
- Laying and installation of cables and wires on-site



## PLANT SAFETY MAINTENANCE & DOCUMENTATION

For the highest quality in the entire process

Reliable systems are a prerequisite for every business success. Regular maintenance is therefore essential.

All components are known due to the hardware engineering carried out by us. Based on this information different concepts can optimise maintenance work and intervals and ensure operational and system reliability. Your plant and investment is protected over the long term and downtimes can be predicted and minimised.

To ensure that the quality of your product remains constant, measurement and control technology (EMSR) devices must be calibrated at regular intervals. This service is naturally performed by trained staff using appropriate measuring tools.

Highly qualified service staff of Wellmann Engineering are at your side in all areas relating to your automation technology and E-technology. We support you in all the required testing and carry out maintenance and repairs of your systems in a reliable and competent manner.

### Our services

- Carrying out the legally required testing under EN 60204-1 and EN 61439.
- Testing of emergency stop and safety devices
- Maintenance of your switchgears, control cabinet inspection, cabling etc.
- Checking of process reliability and IT security
- Backup and archiving of operational data and software
- Set-up and maintenance of the configuration of the EMSR technology
- Determination of maintenance intervals in accordance with national and international regulations.
- Calibration of flow, pressure, temperature, speed, current loop calibration
- Drawing up of maintenance schedules
- On-site inventory of EMSR technology
- Revision and updating of existing documentation in accordance with the latest national and international requirements
- Requirements analysis regarding technical documentation within the company
- Development and creation of SOPs and work flows of documentation processes



## CUSTOMER SUPPORT & SERVICE

Competent & reliable service

### 1. Level Support:

Incidents can be reported to our team via a service number specially set up for contract customers or via e-mail. The cause of the fault is then analysed within one working day by specially trained staff together with the customer. The fault is analysed by means of specific questions and instructions.

### 2. Level Support:

If a solution cannot be found over the telephone, the fault is diagnosed by remote maintenance. Remote maintenance modems and software with the latest security requirements are used for this.

### 3. Level Support:

In most cases, the fault can be rectified over the telephone/ by remote maintenance. However, if the fault cannot be rectified by the measures implemented, a service employee can be sent out.

### Unsere Leistungen

- Quick, reliable and solution-oriented assistance
- Guaranteed service within 24 hours, 7 days a week, 365 days a year
- Cause analysis by trained specialists
- Fault diagnosis via remote maintenance or on-site analysis
- Programming of alarm systems
- Predictive maintenance concepts

### Service-Hotline

A team of employees experienced in engineering, automation and servicing is available at Wellmann Engineering from 7am to 5pm on Monday to Friday.

At the weekend, our customers with a service agreement have a designated contact person, who provides you with assistance in the event of machine downtimes.



Certified specialized welding company in accordance to DIN EN ISO 3834-3  
Certified company according to DIN EN 1090-2 EXC2 supporting components and kits for steel carriers  
Quality management according to DIN EN ISO 9001:2015  
Certification of welding processes according to DIN EN 15614-1  
Specialized company according to § 19 WHG (German Water Resource Act)

---

### **Wellmann Anlagentechnik GmbH**

Künsebecker Weg 48

33790 Halle (Westf.)

Tel. +49 (5201) 81 61-60

Fax +49 (5201) 81 61-69

[automation@wellmann-engineering.eu](mailto:automation@wellmann-engineering.eu)

